

5 Days / 4 Nights

Safari Spectra: Exploring Sabi Sands & Panorama Peaks

Group Size Minimum: 6 pax per departure

Maximum: 10 pax per departure

Panorama Route | Sabi Sand Nature Reserve

Date of Issue: 15 May 2024

[View Web Version >](#)



Trip Summary

Overview of Itinerary:

Welcome to your ultimate luxury safari experience, meticulously crafted to immerse you in the wonders of South Africa's most iconic landscapes and wildlife encounters.

Accommodation:

Day 1 & 2, as you make your way to Graskop from OR Tambo Airport, you'll be enchanted by the breathtaking Panorama views at Hoyohoyo Angelsview Lodge. Nestled amidst the cliffs of the mountain range, the superior rooms offer unparalleled views that will truly transport you to cloud nine. Your stay includes a Panorama Mountain Tour, where you'll marvel at the majestic Blyde River Canyon and scenic other Panorama Stops. On Day 2 you will explore the heart of the Panorama route from the inside when going down the Graskop Gorge Lift.

Day 3 & 4, your journey culminates at Arathusa Safari Lodge, where luxury meets adventure in one of Africa's most leopard-dense locations. Here, you'll have the opportunity to spot these magnificent creatures during exhilarating game drives and guided bush walks, all while indulging in luxury, air-conditioned accommodation and gourmet meals.

Day 5, your journey will come to an end as you head back to OR Tambo Airport with a heart full of memories and new friendships that will last a lifetime.

Activities: Throughout your safari adventure, all transfers to and from destinations are included, ensuring your comfort and convenience. Each transfer is conducted in air-conditioned vehicles with professional guides, with bottled water provided for your refreshment.

Prepare to be captivated by the beauty of South Africa's landscapes, the thrill of wildlife encounters, and the luxury of unparalleled accommodation and service. Your ultimate luxury safari awaits, promising unforgettable moments and cherished memories.

Day	Accommodation	Room Type and Basis
Day 1 - 3	Angels View (2 Nights) in Panorama Route	1x Double Room, 1x Double Room, 1x Double Room (B&B)
Day 3 - 5	Arathusa Safari Lodge (2 Nights) in Sabi Sand Nature Reserve	1x Double Room, 1x Double Room, 1x Double Room (FB+)
Day 5	End of Itinerary	SC

Key

B&B: Bed and Breakfast

FB+: Full Board Plus - Dinner, Bed, Breakfast, Lunch and Activities

| Price

Starting from R29 750 per person

- Minimum number of guests: 6 pax per departure
- Maximum number of guests: 10 pax per departure

This cost includes accommodations, meals, specified activities, transfers, and taxes as outlined in the itinerary. However, it's important to note that certain exclusions and additional expenses may apply, such as personal expenses, gratuities, optional activities not mentioned in the inclusions, visa fees, and flights.

Please keep in mind that prices are subject to change based on factors such as seasonality, availability, and currency fluctuations. It's advisable to confirm the final cost with your chosen tour operator or travel agency, taking into account any specific preferences or additional services you may require.

| Included

Accommodation:

Hoyohoyo Angelsview Lodge:

- **Inclusions:** Breakfast and VAT at 15%.
- **Exclusions:** Dinner options abound, including Mumsy's Restaurant, Café Ahe, private dining experiences, Premium branded beverages, curio shop purchases, spa treatments, and flights.

Arathusa Safari Lodge Rates:

- **Inclusions:** Luxury, air-conditioned accommodation, all meals, high tea in the afternoon, 2 daily game drives, guided bush walks, selection of local house wines, beers, and spirits, free Wi-Fi, and 15% VAT.
- **Exclusions:** Premium branded beverages, curio shop purchases, spa treatments, and flights.

Activities:

All Vehicle and per-person fees for the following activities are included in our rates:

- Activities at Arathusa Safari Lodge as Specified
- Panorama Mountain Tour
- Graskop Gorge Lift

Transfers:

All transfers, vehicle entry fees, and per-person entry fees mentioned are included in the rate. Transfers are done in an Air-conditioned vehicle with a professional guide. Bottled water for each passenger is also included in each transfer.

| Excluded

Accommodation:

Arathusa Safari Lodge Rates:

- **Exclusions:** Premium branded beverages, curio shop purchases, spa treatments, and flights.

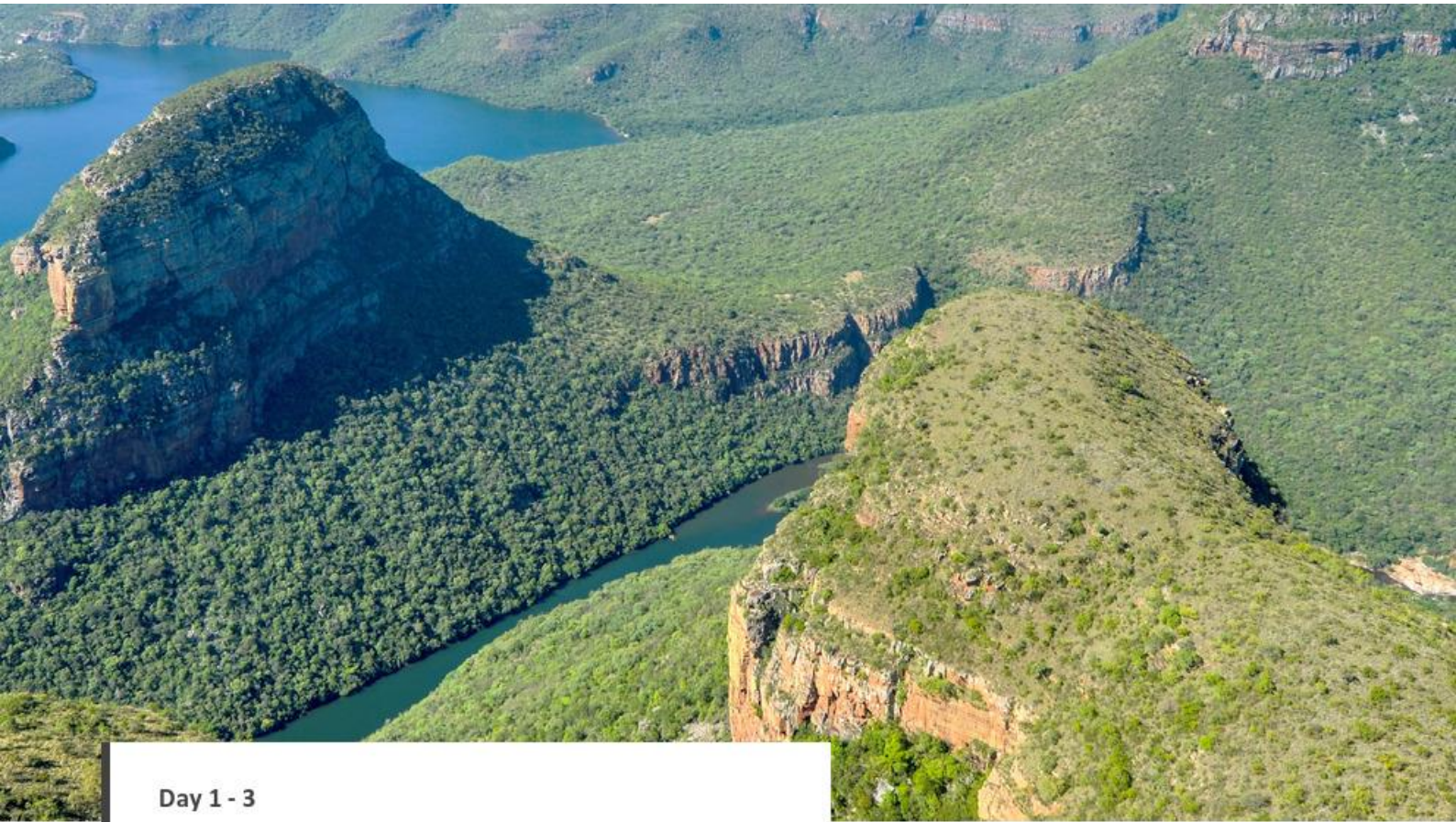
Hoyohoyo Angelsview Lodge:

- **Exclusions:** Dinner options abound, including Mumsy's Restaurant, Café Ahe, private dining experiences, Premium branded beverages, curio shop purchases, spa treatments, and flights.

Other:

- Gratuities
- Curious or gifts purchased on the trip
- All meals and activities not mentioned

Daily Information



Day 1 - 3

Panorama Route

Connecting the Lowveld and the Drakensberg, and sandwiched between the Kruger National Park and the Highlands Meander, the historical Panorama Route is a scenic drive in the Mpumalanga Province. The route features sensational views of natural wonders including fascinating rock formations and impressive waterfalls and boasts numerous scenic hiking trails alongside a myriad of fauna and flora. The quaint little town of Graskop serves as the gateway to this wonderful route. Panorama's undoubted highlight is the Blyde River Canyon, one of the world's largest green canyons, filled with lush subtropical vegetation. Some other popular attractions along the route include the spectacular Lisbon, Berlin, and Mac Mac Falls; Bourke's Luck Potholes; the Three Rondavels; and the astonishing God's Window. Don't miss the world-famous Kruger National Park and the picturesque gold rush town of Pilgrim's Rest, a historic living museum.

| Day Notes

Day 1: Begin your journey from OR Tambo International Airport to Graskop via the Panorama Route. Along the way, marvel at iconic landmarks like Three Rondavels, Wonder View, and the Lisbon Falls before settling in at Angels View Hotel.

Day 2: Explore Graskop Gorge Lift for stunning views, indulge in culinary delights at Harries Pancakes, and discover more scenic wonders along the Panorama Route such as The Pinnacle, Bourke's Lucks Potholes, and more.

Panorama Mountain Tour:

The Panorama Route runs along the spectacular Blyde River Canyon in Mpumalanga and is arguably one of the most beautiful and popular destinations in South Africa. The Panorama Route is best known for its cultural heritage and its dramatic landscapes. It leads through the rocky mountain range of the northern Drakensberg.

From many well-positioned vantage points, one has a view of the 68-mile-long gorge, which starts at Bourke's Luck Potholes and ends at the Three Rondawels. The Potholes are very extraordinary rock formations that were shaped millions of years ago by erosion.

This breathtaking gorge, the third largest in the world, provides unforgettable memories that become indelibly etched upon any avid adventurer's soul. Its scenery is unsurpassed, its vegetation is both varied and lush and provides a home to a rich selection of birds and wildlife.

The Blyde River Canyon is the third deepest canyon in the world (after the Grand Canyon in the western U.S. and Namibia's Fish Eagle Canyon). It ranks as one of the most spectacular sights in Africa.

This great escarpment is the kind of place where brochures and guidebooks run out of original adjectives to describe the fresh mountain scenery and magnificent panoramic views over cliffs rising 600m-800m from the riverbed. The entire canyon extends over 12.5 miles in length.

Blyde Canyon cuts through the Drakensberg Mountain Range, one of the seven major mountain systems in Africa. It is probably the most photographed, painted, and admired area in the country.

The Panorama Route boasts many exciting attractions, waterfalls, lovely towns, and historical sites all well worth a visit. Hazyview and Pilgrim's Rest to mention a few, provide numerous scenic attractions as well as an insight as to how the settlers lived many years ago. On the Abel Erasmus Pass, there is the opportunity to see one of the rarest birds in the world known as the Taita Falcon. The presence of these magnificent birds in South Africa was only discovered in the 1990s. It also affords many the opportunity to go gold panning just as the settlers did over a century ago (gold panning to be pre-booked). Other highlights include the exquisite waterfalls in Graskop and Sabie, The Echo Caves, that

speak of Africa's powerful tribes, trails left behind by the Voortrekkers in regions such as Lydenburg and Ohrigstad, ancient artistic footprints left by the indigenous peoples of Africa and the Gold Rush territory, Pilgrim's Rest, which was home to the early prospectors. A short description of some attractions on this 'must-see-to-any-visitor' Route with its unsurpassed scenery and surrounding terrains.

The Pinnacle

The Pinnacle Rock is a breathtaking sight – this freestanding quartzite buttress towers 30m above a lush indigenous woodland, close to the quaint forestry town of Graskop.

Wonder View

Nestled along South Africa's breathtaking Panorama Route, Wonder View offers an awe-inspiring vantage point where visitors can marvel at the majestic Blyde River Canyon, the third-largest canyon in the world. Its significance lies in its unparalleled panoramic vistas, showcasing the dramatic geological formations and lush landscapes that characterize this iconic region of natural beauty..

Lisbon Falls

The spectacular Lisbon Falls were named by the Portuguese settlers who came to this area in the late 1800s after gold was discovered at nearby Baberton and Pilgrim's Rest. This lush area offers unforgettable views and a vast array of birds.

Bourke's Luck Potholes

These large, cylindrical potholes have been created by the churning whirlpools that occur when the Treur River plunges into the Blyde River Canyon. They are named after Tom Bourke, a miner who correctly predicted that the area would yield large deposits of gold, but never struck it rich as the gold was discovered just south of his claim.

Blyde River Canyon

Blyde River Canyon is one of the largest canyons on the planet and the second largest in Africa. Renowned for its red sandstone cliffs and lush subtropical foliage this natural marvel stretches for 26km and is 762m deep on average.

Three Rondawels

The Three Rondawels, also known as the Three Sisters, are spectacular geological formations that stand 700m tall above the surrounding landscape. These eye-catching peaks are located along Mpumalanga's Panorama Route and are named after the rondavel, a traditional beehive-shaped hut.

Graskop Gorge Lift

Perched within the scenic Graskop Gorge, the Graskop Gorge Lift offers visitors a thrilling descent into the heart of one of Mpumalanga's most spectacular natural wonders. Its significance lies in providing unparalleled access to the lush forested depths of the gorge, offering a unique perspective on its ancient geological formations and cascading waterfalls.

| Included

Accommodation:

Hoyohoyo Angelsview Lodge:

- **Inclusions:** Breakfast and VAT at 15%.
- **Exclusions:** Dinner options abound, including Mumsy's Restaurant, Café Ahe, private dining experiences, Premium branded beverages, curio shop purchases, spa treatments, and flights.

Activities:

All Vehicle and per-person fees for the following activities are included in our rates:

- Panorama Mountain Tour
- Graskop Gorge Lift

Transfers:

All transfers, vehicle entry fees, and per-person entry fees mentioned are included in the rate. Transfers are done in Air-conditioned vehicle with a professional guide. Bottled water for each passenger is also included in each transfer.

| Excluded

Accommodation:

Hoyohoyo Angelsview Lodge:

- **Exclusions:** Dinner options abound, including Mumsy's Restaurant, Café Ahe, private dining experiences, Premium branded beverages, curio shop purchases, spa treatments, and flights.

Other:

- Gratuities
- Curious or gifts purchased on the trip
- All meals and activities not mentioned



Overnight

Angels View

An elegant designer hotel that straddles the Drakensberg escarpment on the doorstep of the Panorama route near the tourism haven of Graskop, Mpumalanga in South Africa. The one-hundred-hectare estate boasts a blend of natural high-altitude fauna and spectacular landscaped gardens. Capturing the essence of the Khoza family's legacy, this unique destination offers an eclectic combination of accommodation styles, and sweeping lounges and terraces gaze across the breath-taking views. Angels View boasts a myriad of facilities that promise to engage our travellers and cater to the most discerning visitors.

[View iBrochure >](#)

| Basis

B&B: Bed and Breakfast

| Activities

Assured & Tailored Panorama Mountain Tour



Graskop Gorge Lift Company The Lift

Planned: Located in Mpumalanga, South Africa, The Graskop Gorge Lift Company is centrally located on the Panorama Route and is an ideal stopover point, whether it be for the view, the forest, the food or the various adventure activities. The viewing lift takes visitors 51 metres down the face of the gorge into the forest below, where wooden walkways and suspension bridges meander along a 600-metre trail through the indigenous forest

with interactive exhibits.



Blyde Canyon Safaris Boat Cruise

Planned: Blyde Canyon Safaris offers a once-in-a-lifetime opportunity to explore the pristine beauty of South Africa's Blyde River Canyon. Together with the Moletele community, they offer scenic boat cruises on the Blyderivierspoort Dam in the Blyde River Canyon. It is a place of pure, untouched beauty and is best seen and experienced from the water on our comfortable boats. The boat cruises take visitors through the awe-inspiring canyon,

where they can view incredible rock formations, rare bird species and other wildlife. The expert guides will share the local culture, history and interesting facts about the area as visitors take in the magnificent sights. Blyde Canyon Safaris also provide refreshments on board and stop at different points to allow passengers to disembark and explore the area. Blyde Canyon Safaris pride itself in giving passengers an unforgettable experience and a chance to discover the wonders of this unique landscape.

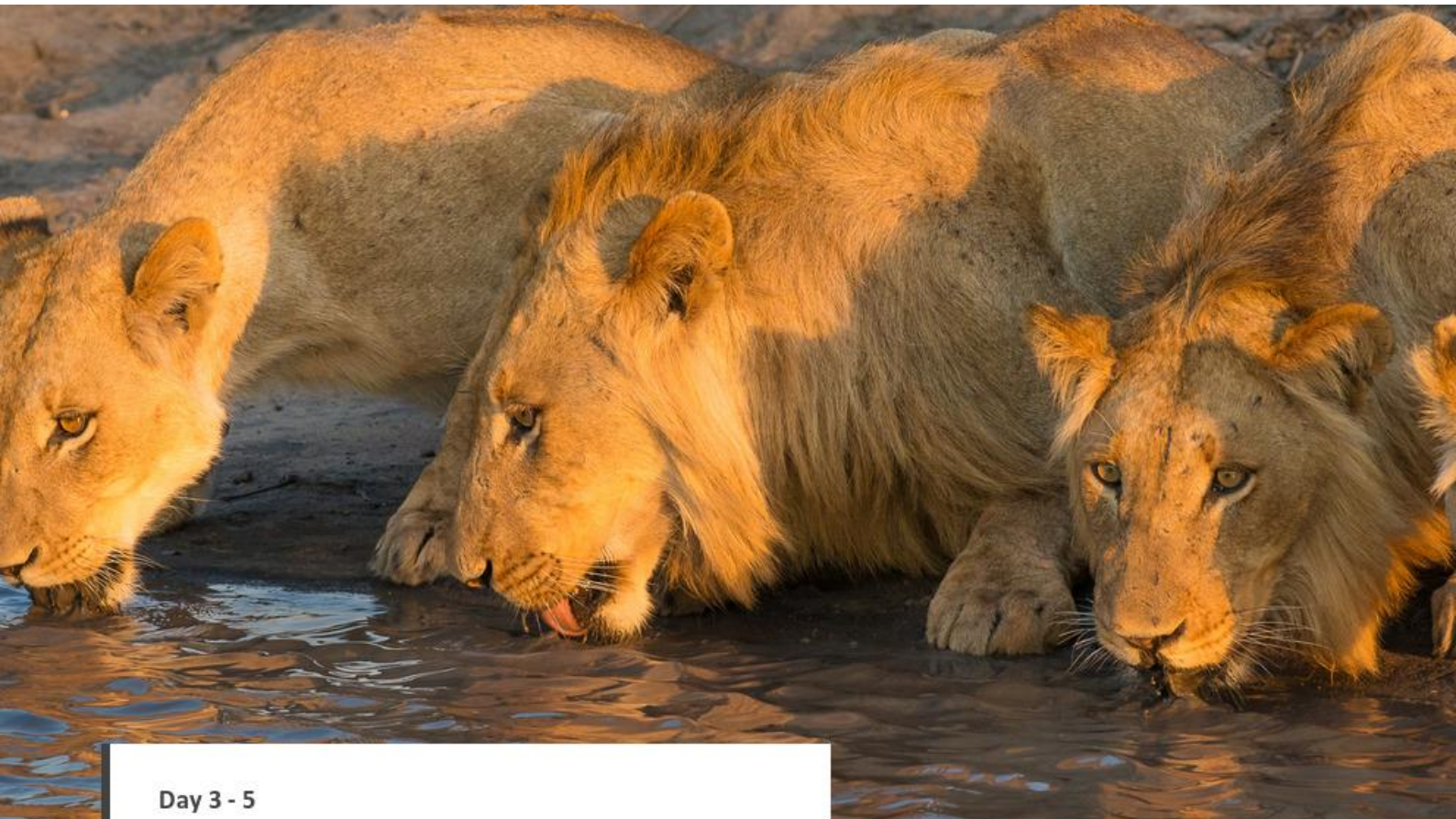


Harries Pancakes Graskop

Planned: We have been serving delectable savoury and sweet pancakes at Harries for the past eighteen years.

Sweet treats include black cherries in liqueur, banana in a caramel sauce, dark chocolate mousse and milk tart custard, with ice-cream or cream.

Whether your taste is for savoury or sweet you won't find a better pancake in South Africa. Fast, friendly and efficient service has made us a favourite with local visitors and international tour groups alike.



Day 3 - 5

Sabi Sand Nature Reserve

Adjacent to the Kruger National Park, the Sabi Sand Nature Reserve is a private premier viewing destination. It was the first-ever private nature reserve established in South Africa. The landscape features 65 000 hectares of savannah-covered land interspersed with watering holes, dry river beds, Lowveld woodlands, and the perennial Sabi and Sand rivers. This spectacular reserve offers exceptional game viewing opportunities with frequent sightings of the renowned Big Five as well as cheetah, zebra, giraffe, and a variety of antelope. Visitors can enjoy excellent wildlife viewing, dining under the stars, guided bush walks and enjoying a stay in some of South Africa's most luxurious safari lodges.

| Day Notes

- Day 3: Depart Angels View in Graskop for Arathusa Safari Lodge
- Day 4: Relax and enjoy the bushveld haven at Arathusa Safari Lodge

Arathusa Safari Lodge; Sabi Sands

Arathusa Safari Lodge is nestled in the heart of the Sabi Sands Game Reserve, renowned for its exceptional wildlife viewing opportunities and luxurious accommodations. Here's a brief elaboration on its location and significance for travelers:

- **Location:** Arathusa Safari Lodge is situated within the Sabi Sands Game Reserve, sharing unfenced borders with the iconic Kruger National Park in South Africa. This prime location ensures abundant wildlife sightings and access to a vast wilderness area teeming with biodiversity.
- **Wildlife Viewing:** Sabi Sands is celebrated for its high concentration of wildlife, including the Big Five (lion, leopard, elephant, buffalo, and rhinoceros). Arathusa offers guests unparalleled game-viewing experiences, with expert guides leading thrilling safaris through the reserve's diverse habitats.

- **Luxury Accommodations:** Arathusa Safari Lodge provides guests with a luxurious retreat in the heart of the African bushveld. From spacious suites overlooking watering holes to intimate bush dinners under the stars, every aspect of the lodge exudes comfort and elegance, enhancing the safari experience.
- **Conservation Efforts:** Sabi Sands is committed to conservation efforts aimed at preserving its pristine wilderness and iconic wildlife species. By visiting Arathusa Safari Lodge and supporting responsible tourism practices, travelers contribute to the ongoing protection of this vital ecosystem.

| **Included**

Accommodation:

Arathusa Safari Lodge Rates:

- **Inclusions:** Luxury, air-conditioned accommodation, all meals, high tea in the afternoon, 2 daily game drives, guided bush walks, selection of local house wines, beers, and spirits, free Wi-Fi, and 15% VAT.
- **Exclusions:** Premium branded beverages, curio shop purchases, spa treatments, and flights.

Activities:

All Vehicle and per-person fees for the following activities are included in our rates:

- Activities at Arathusa Safari Lodge as Specified

Transfers:

All transfers, vehicle entry fees, and per-person entry fees mentioned are included in the rate. Transfers are done in Air-conditioned vehicle with a professional guide. Bottled water for each passenger is also included in each transfer.

| **Excluded**

Accommodation:

Arathusa Safari Lodge Rates:

- **Exclusions:** Premium branded beverages, curio shop purchases, spa treatments, and flights.

Other:

- Gratuities
- Curious or gifts purchased on the trip
- All meals and activities not mentioned



Overnight

Arathusa Safari Lodge

Perched on the bank of a waterhole in the magnificent Sabi Sand Game Reserve, is the luxurious Arathusa Safari Lodge. Dotted amongst the pristine wilderness of the reserve, beautifully-decorated luxury rooms include lovely en-suite bathrooms (with baths, indoor and alfresco showers), air-conditioning, private verandas and sweeping views of the glassy waterhole. Only eight water-facing suites have a view of the waterhole. The four bush-facing suites are remote and have their own pools, but no views.

| Basis

FB+: Full Board Plus - Dinner, Bed, Breakfast, Lunch and Activities

| Activities



AM Game Drive

Planned: Perched on the bank of a waterhole in the magnificent Sabi Sand Game Reserve, is the luxurious Arathusa Safari Lodge. Dotted amongst the pristine wilderness of the reserve, beautifully-decorated luxury rooms include lovely en-suite bathrooms (with baths, indoor and alfresco showers), air-conditioning, private verandas and sweeping views of the glassy waterhole. Only eight water-facing suites have a view of the

waterhole. The four bush-facing suites are remote and have their own pools, but no views.



PM Game Drive

Planned: Perched on the bank of a waterhole in the magnificent Sabi Sand Game Reserve, is the luxurious Arathusa Safari Lodge. Dotted amongst the pristine wilderness of the reserve, beautifully-decorated luxury rooms include lovely en-suite bathrooms (with baths, indoor and alfresco showers), air-conditioning, private verandas and sweeping views of the glassy waterhole. Only eight water-facing suites have a view of the

waterhole. The four bush-facing suites are remote and have their own pools, but no views.



Guided Bush Walk

Planned: Perched on the bank of a waterhole in the magnificent Sabi Sand Game Reserve, is the luxurious Arathusa Safari Lodge. Dotted amongst the pristine wilderness of the reserve, beautifully-decorated luxury rooms include lovely en-suite bathrooms (with baths, indoor and alfresco showers), air-conditioning, private verandas and sweeping views of the glassy waterhole. Only eight water-facing suites have a view of the

waterhole. The four bush-facing suites are remote and have their own pools, but no views.

Day 5

End of Itinerary

| Day Notes

- Day 5: Journey back to OR Tambo International Airport. Reflect on memories made and friendships formed and depart with hearts full of adventure and promises of future reunions.

| Included

Transfers:

All transfers, vehicle entry fees, and per-person entry fees mentioned are included in the rate. Transfers are done in Air-conditioned vehicle with a professional guide. Bottled water for each passenger is also included in each transfer.

| Excluded

Other:

- Gratuities
- Curious or gifts purchased on the trip
- All meals and activities not mentioned

| Basis

SC: Self Catering

Transport

Transfers

Date & Time	Route	Vehicle
Day 1	Pick Up: OR Tambo International Airport [JNB]	Transfer
Day 1	Drop Off: Angels View	
Day 3	Pick Up: Angels View	Transfer
Day 3	Drop Off: Arathusa Safari Lodge	
Day 5	Pick Up: Arathusa Safari Lodge	Transfer
Day 5	Drop Off: OR Tambo International Airport [JNB]	

Urgent Contacts

Contact Person	Email Address	Telephone
Assured and Tailored - Ashleigh Lynn Marr	info@assuredtours.co.za	+27 (0) 71 362 6307

Service Providers

Angels View

Address

Graskop Airfield R533
Bushbuckridge Road
Hazyview
Mpumalanga
South Africa

Contact Numbers

Telephone: +27 79 888 9649
Front Desk: +27 87 550 0812

Graskop Gorge Lift Company The Lift

Address

Graskop, Mpumalanga
R533 Graskop, Hazyview Road.

Contact Numbers

Telephone: +27 66 305 1572

Blyde Canyon Safaris Boat Cruise

Address**Contact Numbers**

Telephone: +27 82 472 1828
Front Desk: +27 82 472 1828

Harries Pancakes Graskop

Address**Contact Numbers**

Telephone: +27 13 767 1273
Front Desk: +27 13 767 1273

Arathusa Safari Lodge

Address**Contact Numbers**

Telephone: +27 67 806 26
Front Desk: +27 13 735 5363

AM Game Drive

Address**Contact Numbers**

Telephone: +27 67 806 26
Front Desk: +27 13 735 5363

PM Game Drive

Address**Contact Numbers**

Telephone: +27 67 806 26

Front Desk: +27 13 735 5363

Guided Bush Walk

Address**Contact Numbers**

Telephone: +27 67 806 26

Front Desk: +27 13 735 5363

Assured and Tailored

Having been established in the Hoedspruit region since 2006, the Assured & Tailored team has a strong track record of exceptional service that makes us the preferred travel partner for the majority of the private lodges in the Lowveld area.

The Assured & Tailored operational offices are based in the town of Hoedspruit, which means we are ideally located to provide these services in all areas, from Malelane south of the Kruger National Park, all the way up the northern reaches of Phalaborwa. Additionally, the business is owner run and managed, so travelers can be rest assured that they will enjoy focused service and personal interaction from start to finish.

Travel Information



Country

South Africa

One of the most culturally and geographically diverse places on earth, South Africa, fondly known by locals as the 'Rainbow Nation', boasts 11 official languages, and its inhabitants are influenced by a fascinating mix of cultures. Discover the gourmet restaurants, impressive art scene, vibrant nightlife, and beautiful beaches of Cape Town. Enjoy a local braai (barbecue) in the Soweto township, browse the bustling Indian markets in Durban, or sample some of the world's finest wines at the myriad wine estates dotting the Cape Winelands. Some historical attractions to explore include the Zululand battlefields of KwaZulu-Natal, the Apartheid Museum in Johannesburg, and Robben Island, just off the coast of Cape Town. Above all else, its untamed wilderness is astonishing: wildlife roams freely across massive unfenced game reserves such as the world-famous Kruger National Park.

| Banking and Currency

Currency

Local currency: South African Rand

Symbol: R

ISO code: ZAR

Subunit: Cent (1/100 of a Rand)

Banknotes: R10, R20, R50, R100, R200

Coins: 10c, 20c, 50c, R1, R2, R5

Banking

Card Transactions: Widely accepted

ATMs: Yes

Mastercard: Yes

Visa: Yes

American Express: Yes

Diner's club: Yes

Banking Hours: Weekdays: 09:00 – 15:30

Weekend: Saturdays: 08:30 – 11:00

Public Holidays: Closed

Foreign exchange services: Yes

| Travel, Transport and Getting Around

Air:

Main airlines: South African Airways

International Airports: O.R. Tambo (Johannesburg), Cape Town International, King Shaka (Durban)

Domestic Airports: Numerous across the country

Road:

Driving on the: Left

Tar roads: Yes, well-maintained in most areas

Gravel roads: Yes, especially in rural areas

Valid International Driver's License needed: Yes

Car hire available: Yes

Taxis: Yes

E-hailing services: Yes, including Uber and Bolt

Bus:

Inter-city bus services: Yes

Local city bus networks: Yes

Rail:

Railway system: Yes, including luxury options like the Blue Train

Subway System: Gautrain in Gauteng

Water:

Ferries: Limited, mainly in coastal cities

Water taxis: No

Leisure cruises: Yes, especially from Cape Town and Durban

| Food, Drink and Cuisine Advice

Food and water safety:

Can you drink the tap water: Yes, in most urban areas

Fresh fruit and veg: Yes

Ice: Yes

Meat: Yes

Street food: Yes, widely popular and generally safe

Local cuisine:

South African cuisine is diverse and flavorful, featuring dishes like biltong (dried, seasoned meat), bobotie (spiced minced meat baked with an egg-based topping), and boerewors (farmers' sausage). The culinary scene includes a strong tradition of barbecuing, known locally as "braai."

Drinks:

Notable local drinks include Rooibos tea, craft beers, and South African wines.

Tipping: Customarily 10-15% in restaurants and for services.

| Climate and Weather

Annual rainfall: Varies widely, Cape Town (winter rainfall, 515 mm), Johannesburg (summer rainfall, 713 mm)

Average temperature: Varies, Cape Town 17°C, Johannesburg 15.5°C

Summer:

Average highs: 28°C (Cape Town), 26°C (Johannesburg)

Average lows: 16°C (Cape Town), 15°C (Johannesburg)

Winter:

Average highs: 18°C (Cape Town), 17°C (Johannesburg)

Average lows: 8°C (Cape Town), 4°C (Johannesburg)

Best time to visit:

The best time to visit South Africa is from May to September for wildlife viewing, as animals are more concentrated around water sources. For beach holidays, mid-December to March is ideal, especially in Cape Town.

| Clothing and Dress Recommendations

Spring and Summer

Cool, light, breathable and comfortable: Yes

Lightweight warm clothes: No

Winter and Autumn

Jerseys, cardigans, sweaters, jackets: Recommended

Heavyweight clothing and boots: Yes

General

Umbrella and raincoat: Yes, during the rainy seasons

Warm gloves, hat and scarf: In winter, particularly in high-altitude areas

Swimming costume (bathing suit): Yes

Hat, sunglasses, and sunblock: Essential

Walking shoes: Yes

Casual: Yes

Smart-casual attire: Yes

| Internet Availability

Internet cafes: Yes, mainly in urban areas

Accommodation options: Yes, with good connectivity

Restaurants: Yes, in major cities

Cafes: Yes, with Wi-Fi available

Shopping malls: Yes

Public parks: Yes, in major cities

Libraries: Yes

| Electricity and Plug Standards

Plug Type: M, N

Voltage (V): 230 V

Frequency (Hz): 50 Hz

*A travel plug adapter and voltage converter might be necessary depending on your appliances.

Terms and Conditions

I Itinerary Terms and Conditions

TERMS AND CONDITIONS

Undertaking:

Assured and Tailored CC undertakes to provide all services offered subject to the terms and conditions set out herein, which terms and conditions are accepted by the traveller.

Definition:

1. Assured and Tailored means: Assured and Tailored CC
2. Traveller means: Individuals, groups, companies, or other legal persons using the services offered by Assured and Tailored and includes the agents of travellers.
3. Service means: The provision of accommodations and/or transportation and/or meals and/or any and all other travel services and activities as offered or provided by Assured and Tailored and accepted by the traveller.

Quotations:

- Quotations are based on itineraries and requirements specified by the customer. Upon receipt of the quotation, any changes requested by the customer which incur additional costs will be charged to the customer.
- Prices are subject to change in the event of a change in the price of fuel, entrance fees or in the rate of VAT without prior notice.
- Quotations are quoted in SA Rand and are only valid as stated on the quotation.
- All rates are quoted on a one-way basis unless otherwise stated.
- All services are carried out in air-conditioned vehicles unless otherwise stated.
- Our vehicles carry appropriate road transport permits, operating licenses, driver/guides are licenced, and applicable insurance carried.
- Identity documents/passports may be required for entry to Kruger National Park as well as neighbouring countries.
- Prices for services of sub-contractors may vary and such charges will be communicated to the customer in writing.
- Acceptance of the quotation will be regarded as also acceptance of Assured and Tailored CC Terms & Conditions of business.
- Confirmation and / or cancellation must be done in writing.

Our Quotations Exclude:

- All portorage and fees.
- All entrance fees.

- All meals and beverages.
- If there is only one driver / guide in the vehicle, he is only allowed to travel a maximum of 8 hours per day, thereafter a second driver / guide will be added for safety reasons.
- Driver / guide meals and accommodation for your account and arrangement.
- VAT as we are not VAT registered.
- 6.5% Surcharge in Credit Card payments

Our Quotations Includes:

- Insurance (Passenger and General Public Liability)
- Fuel
- Driver / Guide
- Vehicle
- Toll fees
- Complimentary bottled water for guest pleasure

Reservations and Deposits:

FIT Bookings:

- 50% deposit of the total quoted price is required to confirm a reservation.
- 100% payment is required if services are to be rendered within 30 days.

Block Bookings: (More than three vehicles required for the same itinerary)

- 30% deposit of the total quoted price is required to confirm a reservation.
- 50% deposit is required if services are to be rendered within 31 – 90 days.
- 100% payment is required if services are to be rendered within 30 days.
- For tours that include services of certain suppliers with more stringent policies, e.g., Hot Air Ballooning, Elephant Interaction and Elephant Back Safaris, Extreme Excursions and others, different payment terms may be enforceable. These will be provided when applicable.
- Large group programs may attract specific payment terms which will be provided when applicable.
- Airline reservations, payment immediately on booking. All airfare reservations are arranged subject to the conditions imposed by the respective airline.
- If the required deposit of final payment is not received by due date, Assured and Tailored reserves the right to withdraw services.
- The non-issuing of an invoice or non-payment of deposit will not exempt travellers from these payment terms.

Cancellations: Cancellations shall only be valid if received in writing.

FIT Bookings:

- 50% of reservation 8 weeks prior to arrival.
- 75% of reservation 6 weeks prior to arrival.
- 100% of reservation 4 weeks prior to arrival.

Block Bookings:

- 30% of reservation 12 weeks prior to arrival.
- 50% of reservation 8 weeks prior to arrival.
- 75% of reservation 6 weeks prior to arrival.
- 100% of reservation 4 weeks prior to arrival.

(We recommend that travellers take adequate personal cancellation insurance cover before departure from home.)

Amendments:

Although much care has gone into the composition of programs and tours for travellers, however circumstances such as fuel surcharges or price amendments by suppliers may necessitate changes in costs and tour programs. Should this occur, you would be notified as soon as possible, although Assured and Tailored does reserve the right to change the itinerary of the tour without prior notice. Notwithstanding that deposits or complete payments have been made, any increase up until the date of departure of arrangements resulting to the above are to be paid by the traveller. If such increases are unacceptable, the traveller may cancel his/her booking, though in so doing he/she is still liable to pay any cancellation charges imposed in the way of cancellation, administration, communication charges etc.

Payment:

- Full payment for services is required prior to departure.
- Although credit facilities may be granted to customers, as deposit for block bookings will still be applicable.

Children's Policy:

- 0 – 2 years of age – Free of charge on all transfer services – please enquire for tours and accommodation
- 3 – 5 years of age – 50% of quoted per person price – please enquire for tours and accommodation
- 6 years and older – 100% of quoted per person price – please enquire for tours and accommodation

Method of payment:

Bank transfers – Please use Assured and Tailored CC banking details:

- Business cheque account
- Assured and Tailored CC
- Standard Bank Hoedspruit
- Account number: 330875078
- Branch code: 052752
- SWIFT Code: SBZAJJ

Credit Card – Should you be paying by credit card; a 6.5% surcharge will be added to your total invoice amount. A secure Payment link will be created and sent to client in order to authorize their own payment online.

Cash – Cash payments welcome.

Insurance:

Assured and Tailored carries comprehensive liability insurance which can be made available on request.

Indemnity:

- Assured and Tailored, its affiliated subsidiary companies, agents and sponsoring organizations act only as agent for the suppliers of transportation, accommodations, food, and other goods and services provided to the passenger. All arrangements for transport, accommodations and services are made upon the express condition that Assured and Tailored shall not liable for any direct, indirect, consequential, or incidental damage, injury, loss, accident, delay or irregularity of any kind occasioned by reason of any act of omission beyond its control, including, without limitation, any act of negligence or breach of contract of any third party such as an airline, cruise line, train, hotel, restaurant, ground handler, etc., who is to of does supply any goods of services for a tour. Without limiting the foregoing, Assured and Tailored is not responsible for any losses or expenses due to delay or changes in schedule, overbooking of accommodations, default of any third parties, sickness, weather, strikes, acts of God, acts of terrorism, was, quarantine, criminal activity or for any other cause beyond its control.
- Safari programs may take travellers into close contact with wild animals. Rangers and guides should brief travellers accordingly, however, neither Assured and Tailored nor can their employees be held responsible for any injury or accident while on safari.
- We strongly recommend that travellers take adequate personal travel insurance cover before departure from home.

Jurisdiction:

The law of the Republic of South Africa shall govern the relationship between Assured and Tailored and the traveller and the Courts of the Republic of South Africa shall have sole jurisdiction in respect of any claims and/or disputes which may arise between Assured and Tailored and the traveller, or Agent.

Passenger Luggage and Personal Effects:

- Personal belongings and luggage are carried at the owner's risk. Assured and Tailored CC accepts no liability for loss or damage under any circumstances.
- Passengers shall under no circumstances, carry with them on the vehicles any weapons, explosives or items which in the sole opinion of Assured and Tailored CC believes to be dangerous or hazardous, or likely to cause offence to other passengers or their property.

Exclusion of Liability:

- Assured and Tailored CC shall not be liable in any way for partial or total failure to perform the contract by reason of any mechanical or other defects, breakdown, accident or any other cause including any strike or lockout, fire or act of God, or any claims, damages or expenses arising out of defects or failure as foresaid, or any delays in starting, transit, arrival or return of any vehicle.

Company Sub-Contracts:

- Assured and Tailored CC reserves the right to sub-contract in case of emergency and when this right is exercised, the substitute vehicle will, as far as circumstances permit, compare equally with Assured and Tailored CC vehicle. If such vehicle is not acquired, it remains the customer's right to obtain a vehicle to his own standard and cost. In the event of Assured and Tailored CC sub-contracting a vehicle, it is agreed that the substituted vehicle operator shall act as an independent contractor, not subject to the control of Assured and Tailored CC. It shall be deemed that the customer and the sub-contracted vehicle operator entered into a contract of hire
- and that the customer indemnifies Assured and Tailored CC against any claim for damage of otherwise resulting from the driving of the substituted vehicle.

General:

Any agreement, of which these Terms and Conditions of Business form part of, shall be governed by the laws of the Republic of South Africa

| Assured and Tailored Terms and Conditions

Reservation Confirmation:

A 50% deposit is required to secure all reservations.

Full Payment is required 30 days prior to arrival.

Cancellation Policy :

50% of reservation 8 weeks prior arrival

75% of reservation 6 weeks prior arrival

100% of reservation 4 weeks prior arrival.